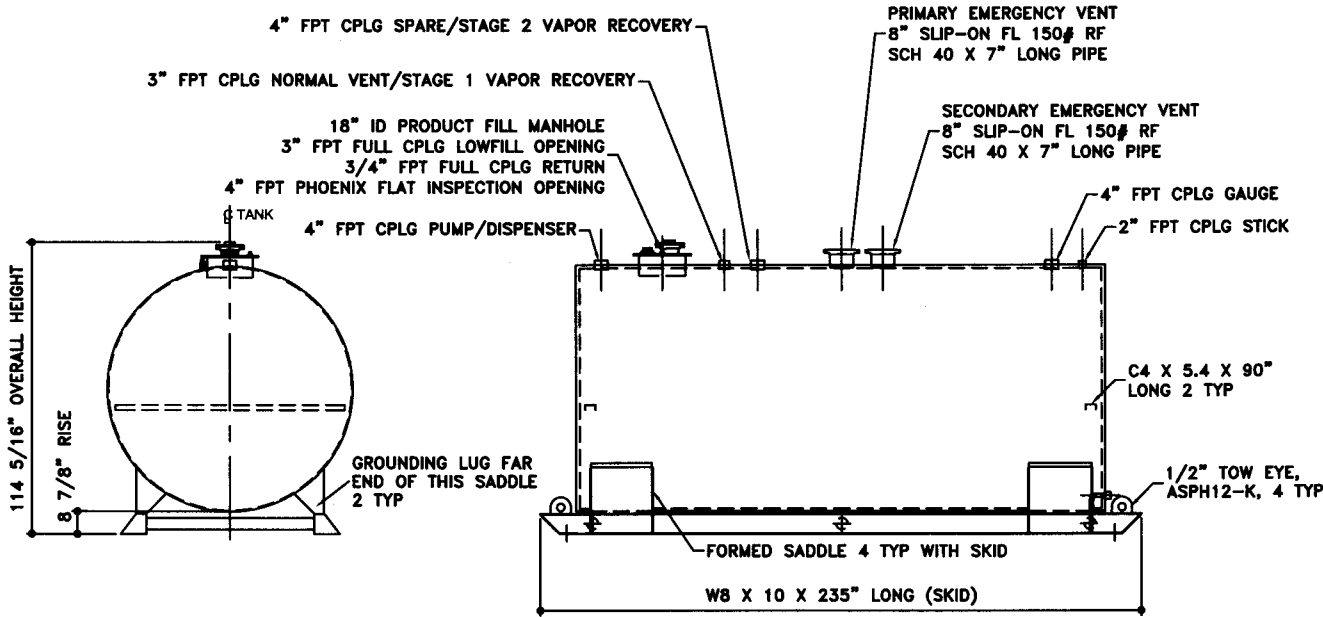
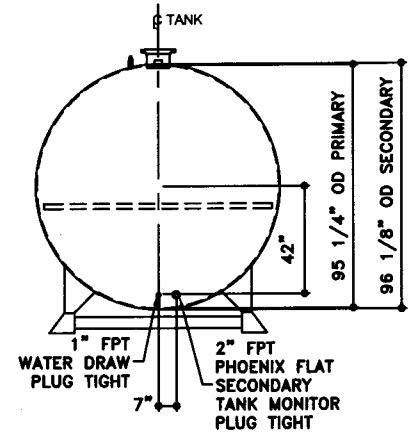


TOP VIEW



ELEVATION - END VIEW

ELEVATION - SIDE VIEW



ELEVATION - END VIEW

TOLERANCES	
TANK	
CAPACITY	-0% / +10
OVERALL LENGTH	-0" / +2"
OVERALL WIDTH	-0" / +1"
OVERALL HEIGHT	-1/2" / +1/2"
OTHER DIMENSIONS	-1/4" / +1/4"

UL 142 (BUILT & LABELED)  
HOLDDOWNS ARE SEISMIC RATED  
DOUBLE WALL TANK  
SKID TANK

STEEL: ASTM A36  
PRIMARY TANK  
SHELL: 2 GAUGE (1/4")  
HEAD: 2 GAUGE (1/4")

COATING:  
"R" EXTERIOR COATING, ACE 1A  
RED SHOP COAT 1-3 MILS

"A" EXTERIOR ACE 3A COATING:  
SP-6 GRIT BLAST  
3A COLOR: #WH01 (WHITE)  
1 CT TN-161 EPOXY 3.0-5.0 MILS  
1 CT TN-74 URETHANE 2.0-3.0 MILS  
TDFT 5.0-8.0 MILS

SPECIAL INSTRUCTIONS  
PLUG TIGHT  
WRENCH PLUG TIGHT WITH PIPE DOPE  
ON THREADS AND TESTED LEAK FREE.

APPROXIMATE SHIPPING WEIGHT  
11,360 LBS.

TANK VENT CAPACITY  
312,000 PRIMARY TANK

312,000 SECONDARY TANK

DRW BY  
-  
REV NO  
1  
SHEET  
2  
OF  
-



1-208-281-5000

**AceSkidLite II - 6,000 GALLON**

ACE PART No. **AC06000U2K4** QTY: **1**

(F:111ACSHOPISKIDU2K410600012-OR THO.GCD-1:48)

SECONDARY TANK  
SHELL: 8 GAUGE (3/16")  
HEAD: 2 GAUGE (1/4")

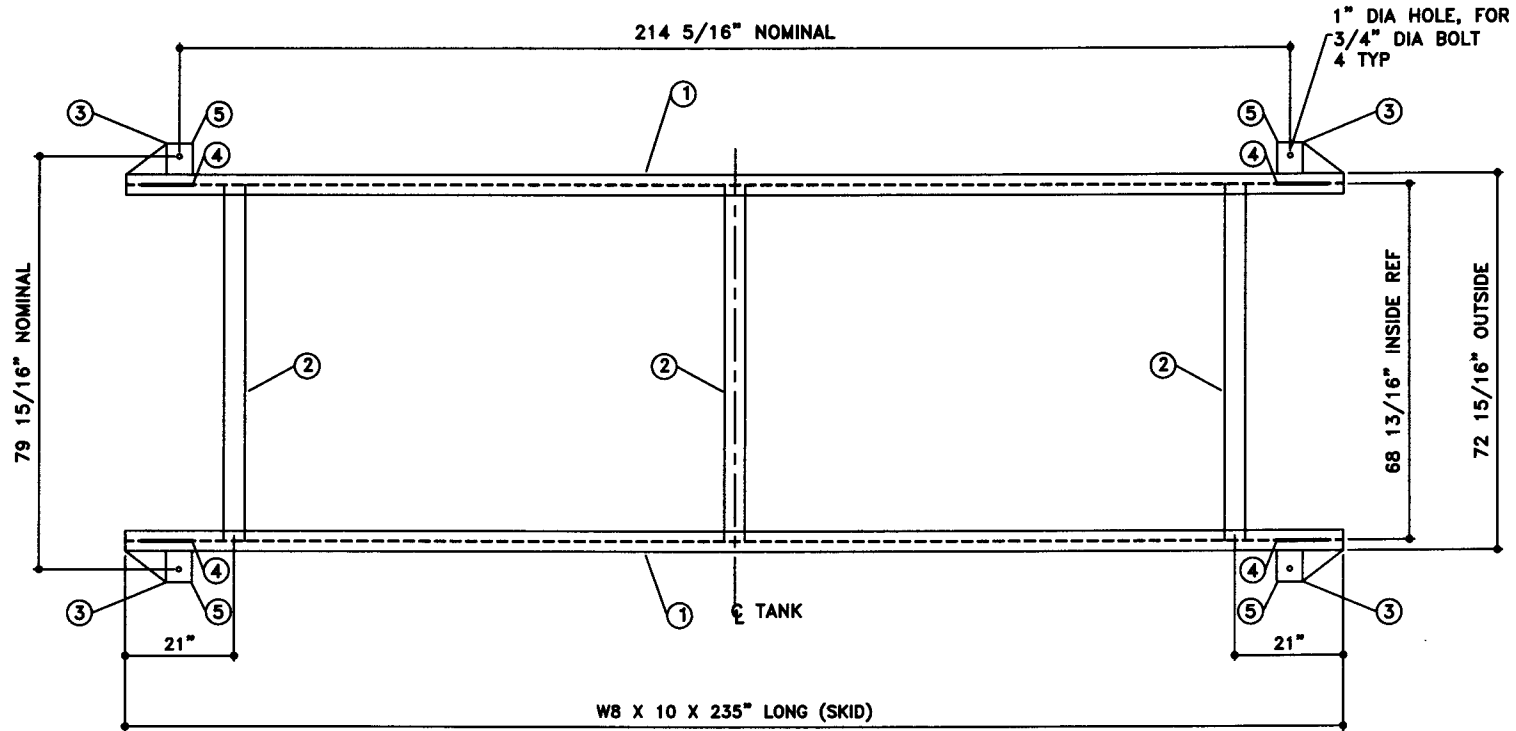
INTERIOR:  
BARE STEEL

JOB ID No. - ACE HOUSE PAPER No. - ENG. FILE No. -  
01-01-02 SUPERCEDES 09-01-01

# BILL OF MATERIAL

NOTE:  
1. ALL NOMINAL DIMENSIONS ARE 2"±

ITEM	QTY	NAME	DESCRIPTION	MATL	PART No.	NOTES
1	2	SKID BEAM	WB X 10 X 235" LONG	A36	-	MOUNT, COAT
2	3	SKID CROSS BRACE	4" SCH. 40 PIPE X 88 13/16" LONG	A36	-	MOUNT, COAT
3	-	END CAP	-	-	-	SEE DTL SHT
4	-	TOW EYE	-	-	-	SEE DTL SHT
5	-	SEISMIC HOLD DOWN	-	-	-	SEE DTL SHT



TOP VIEW

JOB ID No.	TOLERANCES
-	SKID
ACE HOUSE PAPER No.	OVERALL LENGTH -1/4" / +1/4"
-	OVERALL WIDTH -1/4" / +1/4"
ENGG. FILE No.	OVERALL HEIGHT -1/4" / +1/4"
-	OTHER DIMENSIONS -1/8" / +1/8"

QUANTITY	PART NAME
1	SKID DETAILS
	-
	ACE PART No. AC06000U2K4
	(1:24)

No.	DRAWING / REVISION	ISSUED BY	CHECKED BY	SHEET
1	1ST SUBMITTAL	-	-	OF
-	-	-	-	
-	-	-	-	
-	-	-	-	
01-01-01 SUPERCEDES				