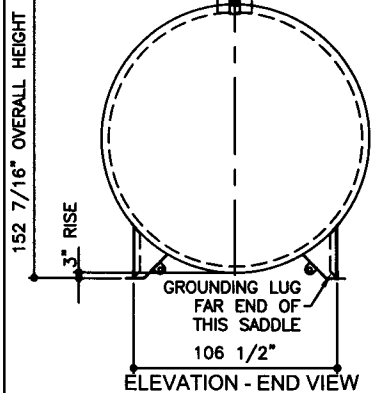
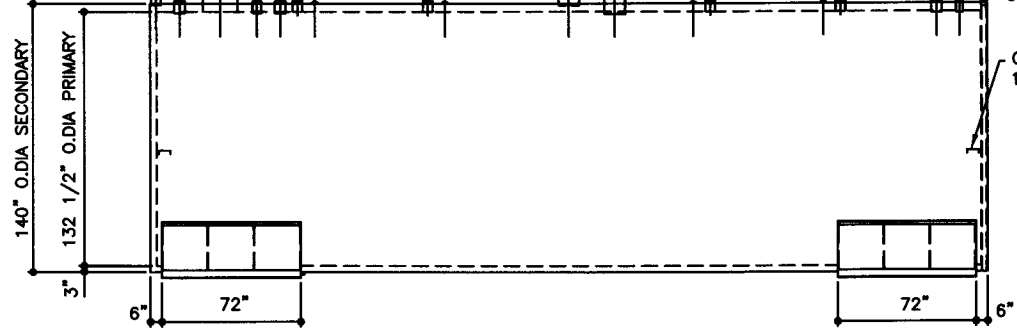


TOP VIEW

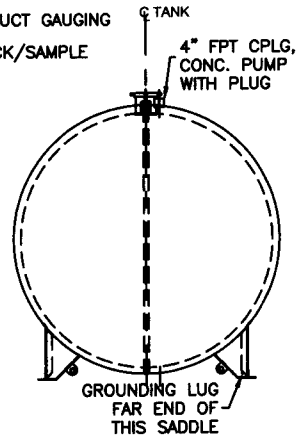
- 4" FPT ACFGPIPE5X6, AUXILIARY, STAGE II, VAPOR RECOVERY
- 3" FPT ACFGPIPE4X9, VENT PRIMARY STAGE I VAPOR RECOVERY
- 18" ID PRODUCT FILL MANHOLE W/ 3" FPT FILL OPENING 3/4" FPT RETURN
- 4" FPT INSPECTION PORT
- 4" FPT ACFGPIPE5X6, PRODUCT DISPENSING
- 4" FPT CPLG, CONC. PUMP WITH PLUG
- 2" FPT PHOENIX FLAT, CONC PORT WITH PLUG, 4 TYP
- EMERGENCY VENT SECONDARY 10" 150# RF SLIP-ON FLANGE SCH 40 X 7" LONG PIPE ACFGVENT10-S
- EMERGENCY VENT PRIMARY 10" 150# RF SLIP-ON FLANGE SCH 40 X 11" LONG PIPE ACFGVENT10-L
- 4" FPT ACFGPIPE5X6, PRODUCT GAUGING
- 2" FPT ACFGPIPE3X9, STICK/SAMPLE
- 2" FPT CPLG, ANNULAR SPACE MONITORING



ELEVATION - END VIEW



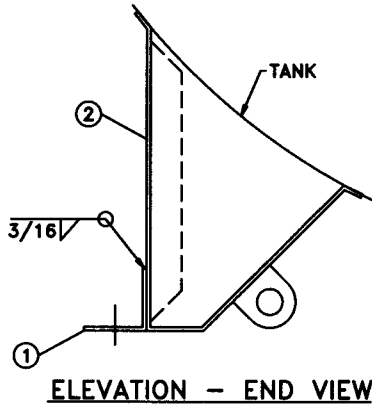
ELEVATION - SIDE VIEW



ELEVATION - END VIEW

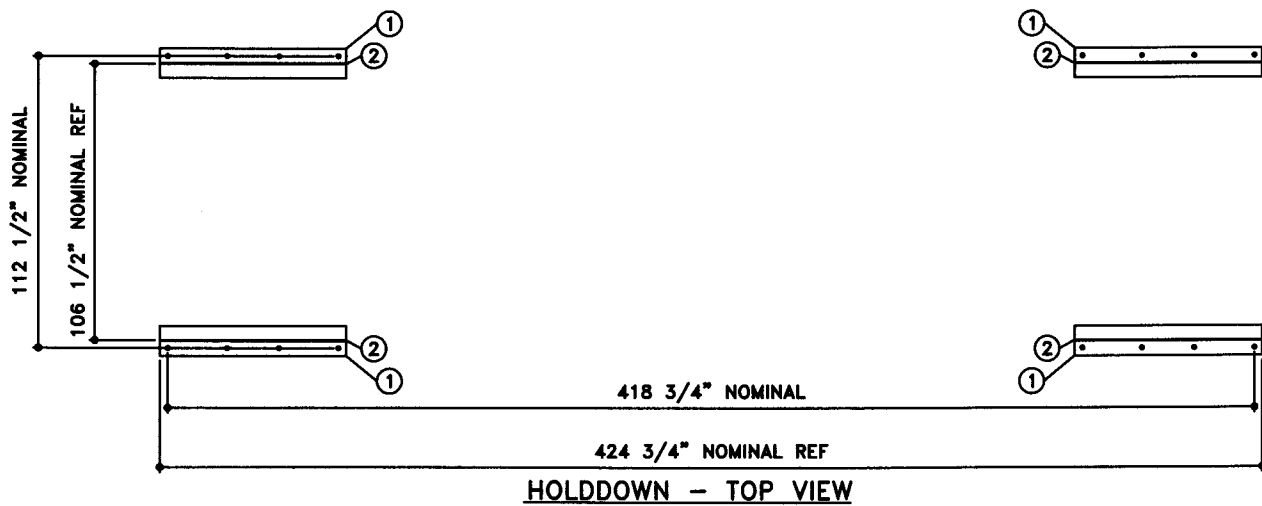
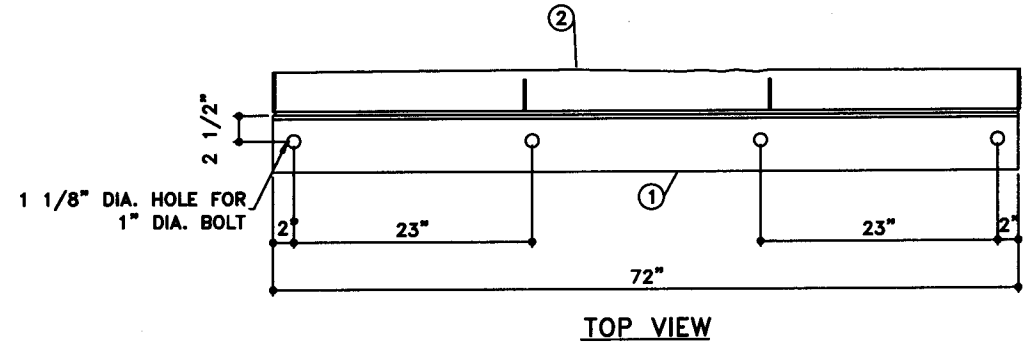
| | | | | | | | | | | | | |
|---|--|---|--|---|--|--|--|--|--|--|--|---|
| TOLERANCES TANK CAPACITY -0% / +10 OVERALL LENGTH -0" / +2" OVERALL WIDTH -0" / +1" OVERALL HEIGHT -1/2" / +1/2" OTHER DIMENSIONS -1/4" / +1/4" | | UL 2085 (BUILT & LABELED) UL 142 (BUILT & LABELED) STI-F941 (BUILT & LABELED) HOLDDOWNS ARE SEISMIC RATED DOUBLE WALL WITH 3" INSULATION CYLINDRICAL FIREGUARD WITH SUPPORTS | | STEEL: ASTM A36 PRIMARY TANK SHELL: 2 GAUGE (1/4") HEAD: 2 GAUGE (1/4") | | COATING: EXTERIOR ACE 3A COATING: SP-6 GRIT BLAST 3A COLOR: #WH01 (WHITE) 1 CT TN-161 EPOXY 3.0 -5.0 MILS 1 CT TN-74 URETHANE 2.0 -3.0 MILS TDFT 5.0 -8.0 MILS | | SPECIAL INSTRUCTIONS FILL ANNULAR SPACE WITH PORTLAND CEMENT / PERLITE, CEMENT GRADE MIX. LEAVE 1" AIR GAP BETWEEN PERLITE & SECONDARY TANK INTERSTITIAL SPACE: 450 CUBIC FEET | | APPROXIMATE SHIPPING WEIGHT 53,050 LBS. 38,650 LBS. (WITHOUT CEMENT) TANK VENT CAPACITY 557,000 PRIMARY 557,000 SECONDARY | | DRW BY - REV No 1 SHEET 2 OF - |
| FIREGUARD - 25,000 GALLON ACE PART No. AC25000U2G1 QTY: 1 (F:111ACSHOPIFIREGUARDU2G1-312500012-ORTHO.GCD-1:64) | | SECONDARY TANK SHELL: 2 GAUGE (1/4") HEAD: 0 GAUGE (5/16") | | INTERIOR: BARE STEEL | | JOB ID No. - ACE HOUSE PAPER No. - ENG. FILE No. - 01-01-02 SUPERCEDES 10-01-01 | | | | | | |





| BILL OF MATERIAL | | | | | | |
|------------------|-----|----------|-------------------------|------|----------|-------------|
| ITEM | QTY | NAME | DESCRIPTION | MATL | PART No. | NOTES |
| 1 | 4 | HOLDDOWN | L4 X 4 X 1/4 X 72" LONG | A36 | - | MOUNT, COAT |
| 2 | - | SADDLE | - | A36 | - | SEE DTL |

NOTE:
1. ALL NOMINAL DIMENSIONS ARE 3"±



| JOB ID No. | TOLERANCES | QUANTITY | PART NAME |
|---------------------|--------------------------------|----------|-----------------------------|
| - | SEISMIC HOLDDOWN | 1 | SEISMIC HOLD DOWN - DETAILS |
| ACE HOUSE PAPER No. | OVERALL LENGTH -1/8" / +1/8" | | |
| - | OVERALL WIDTH -1/8" / +1/8" | | |
| ENGR. FILE No. | OVERALL HEIGHT -1/8" / +1/8" | | ACE PART No. AC25000U2G1 |
| - | OTHER DIMENSIONS -1/8" / +1/8" | | (1:12) |

| No. | DRAWING / REVISION | OWNED BY | CHECKED BY | SHEET |
|-----|--------------------|----------|------------|-------|
| 1 | 1ST SUBMITTAL | - | - | OF |
| - | - | - | - | - |
| - | - | - | - | - |
| - | - | - | - | - |