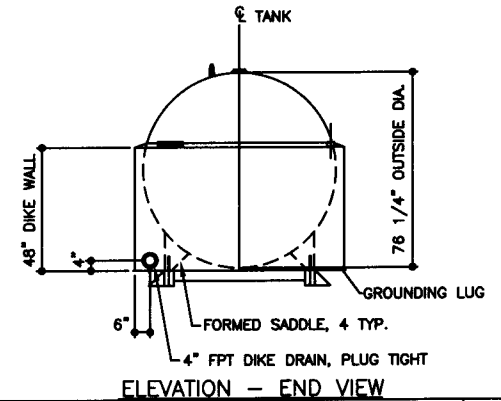
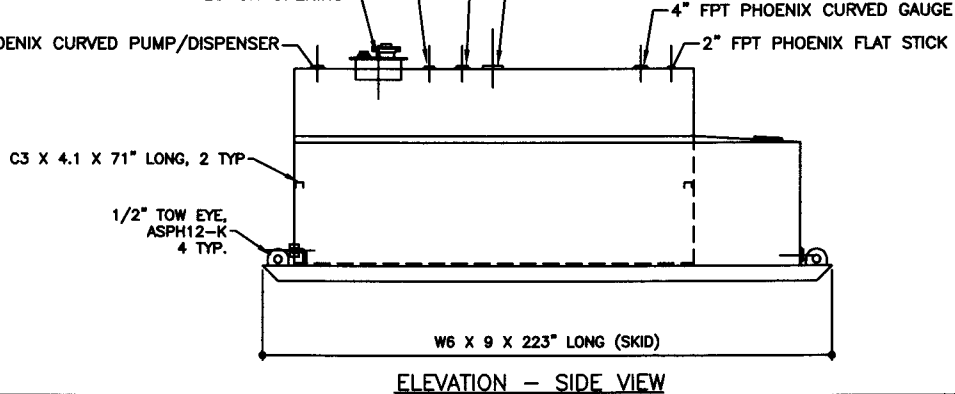
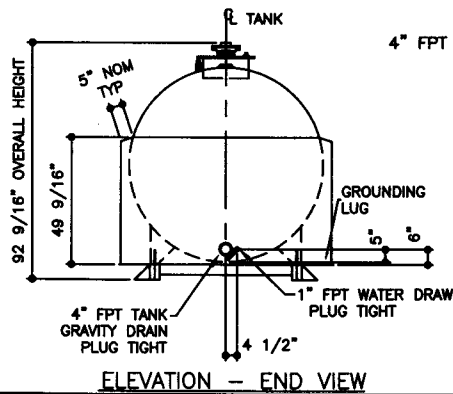


- 3" FPT PHOENIX CURVED NORMAL VENT/STAGE 1 VAPOR RECOVERY
- 4" FPT PHOENIX CURVED SPARE/STAGE 2 VAPOR RECOVERY
- 18" ID PRODUCT FILL MANHOLE
- 3" FPT FULL CPLG LOWFILL OPENING
- 3/4" FPT FULL CPLG RETURN
- 4" FPT PHOENIX FLAT INSPECTION OPENING
- 4" FPT PHOENIX CURVED PUMP/DISPENSER
- 6" FPT PHOENIX CURVED EMERGENCY VENT
- 4" FPT PHOENIX CURVED GAUGE
- 2" FPT PHOENIX FLAT STICK



TOLERANCES	
TANK	
CAPACITY	-0% / +10
OVERALL LENGTH	-0" / +2"
OVERALL WIDTH	-0" / +1"
OVERALL HEIGHT	-1/2" / +1/2"
OTHER DIMENSIONS	-1/4" / +1/4"

UL 142 (BUILT & LABELED)  
HOLDDOWNS ARE SEISMIC RATED  
DIKE TANK WITH SKID

STEEL: ASTM A36  
PRIMARY TANK  
SHELL: 6 GAUGE (3/16")  
HEAD: 6 GAUGE (3/16")

DIKE TANK  
FLOOR: 6 GAUGE (3/16")  
WALL: 10 GAUGE (9/64")  
COWLING: 10 GAUGE (9/64")

COATING:  
"R" EXTERIOR COATING, ACE 1A  
RED SHOP COAT 1-3 MILS

"A" EXTERIOR ACE 3A COATING:  
SP-6 GRIT BLAST  
3A COLOR: #WH01 (WHITE)  
1 CT TN-161 EPOXY 3.0-5.0 MILS  
1 CT TN-74 URETHANE 2.0-3.0 MILS  
TDF 5.0-8.0 MILS

INTERIOR:  
BARE STEEL

SPECIAL INSTRUCTIONS  
PLUG TIGHT  
WRENCH PLUG TIGHT WITH PIPE DOPE  
ON THREADS AND TESTED LEAK FREE.

STIFFENERS ARE NOT SHOWN IN  
ELEVATION VIEWS FOR CLARITY

APPROXIMATE SHIPPING WEIGHT		DRW BY
5,770 LBS.		-
TANK VENT CAPACITY 239,000 PRIMARY		1
		2
		OF



**AceDike - 3,000 GALLON**

ACE PART No. AC03000U2D2 QTY: 1

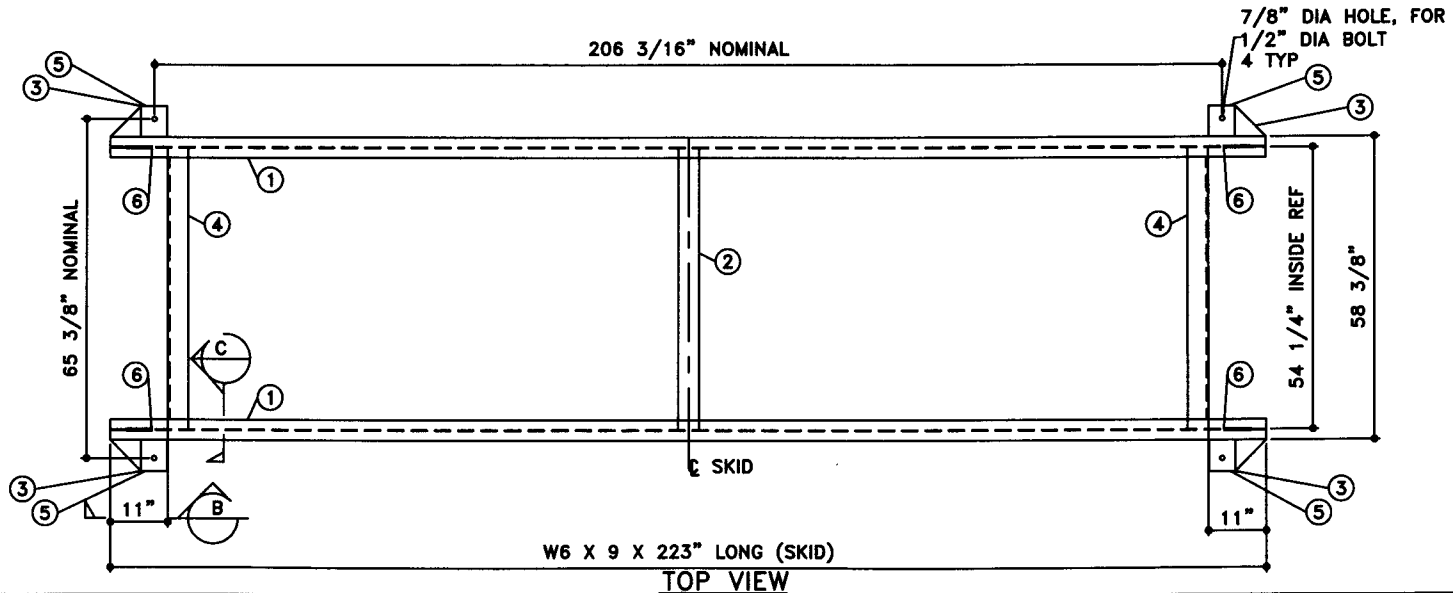
(F:111)ACSHOPIDIKEU2D210300012-ORTH.GCD-1:48

JOB ID No.	ACE HOUSE PAPER No.	ENG. FILE No.
-	-	-
01-01-02 SUPERCEDES 09-01-01		

NOTE:  
1. ALL NOMINAL DIMENSIONS ARE 2"±

### BILL OF MATERIAL

ITEM	QTY	NAME	DESCRIPTION	MATL	PART No.	NOTES
1	2	SKID BEAM	W6 X 9 X 223" LONG	A36	-	MOUNT, COAT
2	1	SKID CROSS BRACE	4" SCH 40 PIPE X 54 1/4" LONG	A36	-	MOUNT, COAT
3	-	SKID CAP	PLATE	-	-	MOUNT, COAT
4	2	SKID CROSS BRACE	L4 X 4 X 3/8 X 54 1/4" LONG TOE DOWN COPE ENDS	A36	-	MOUNT, COAT
5	-	SEISMIC HOLD DOWN	PLATE	A36	-	MOUNT, COAT
6	-	TOW EYE	PLATE	A36	-	SEE DTL SHT



### TOP VIEW

JOB ID No.	TOLERANCES
ACE HOUSE PAPER No.	SKID
ENG. FILE No.	OVERALL LENGTH -1/4" / +1/4"
	OVERALL WIDTH -1/4" / +1/4"
	OVERALL HEIGHT -1/4" / +1/4"
	OTHER DIMENSIONS -1/8" / +1/8"

QUANTITY	PART NAME	SKID DETAILS
1	ACE PART No.	AC03000U2D2
	(1:24)	

No.	DRAWING / REVISION	DRAWN BY	CHECKED BY	SHEET
1	1ST SUBMITTAL	-	-	OF
-	-	-	-	
-	-	-	-	
-	-	-	-	

01-01-01 SUPERCEDES